



DONOR IMPACT REPORT

Fiscal Year 2024 | April, May, June 2024



SAN FRANCISCO
GENERAL HOSPITAL
FOUNDATION



As the Foundation approaches the end of its fiscal year on June 30, I am joined by our Board of Directors, Foundation staff, and Hospital partners in reflecting on all we have accomplished together over the past twelve months.

Recently, Dr. Susan Ehrlich, CEO at Zuckerberg San Francisco General Hospital and Trauma Center (ZSFG), was honored by the San Francisco Business Times as one of the *Bay Area's Most Admired CEOs*. Dr. Ehrlich's extraordinary leadership is evident in her vision for health equity and her dedication to putting those values into practice as a physician in ZSFG's Richard Fine People's Clinic. You can watch an interview with Dr. Ehrlich outlining the use of AI at ZSFG—see [page 2](#) for more information.

Dr. Ehrlich's unwavering commitment has resulted in a hospital-wide focus on equity, formalized recently at the inaugural ZSFG Equity Awards. Awardees were nominated by colleagues, and their stories are potent reminders of the vital role played by SFGHF in this work—investing in new ideas and supporting our provider partners to innovate exceptional public health care for all. Read more on [page 5](#).

Though the awards are now behind us, health equity remains at the core of ZSFG's everyday work, from the use of predictive analytics to overcome health disparities to the addition of Patient Navigators, whose expertise enables the hospital to better support its patients with behavioral health needs.

Finally, as we close our fiscal year, we express sincere appreciation for the four SFGH Foundation board members whose terms will end on June 30. Our tribute to them can be found on [page 4](#).

As you will see throughout this Donor Impact Report, our work is wide-ranging, and the need runs deep. Thank you for making it all possible, and I look forward to continuing this important work together.

With gratitude,

Kim Meredith

Kim Meredith, Chief Executive Officer

Prioritize Women's Health



Zuckerberg San Francisco General Hospital (ZSFG) empowers women's health year-round and shines a spotlight on this important population each year during National Women's Health Week, which took place May 12-18. With its patient-centered approach, ZSFG champions women's health equity through accessible, holistic care, including life-saving

screenings and support for life transitions. Donor support ensures that every woman has access to preventative care. Together, we can make a difference, one mammogram at a time.

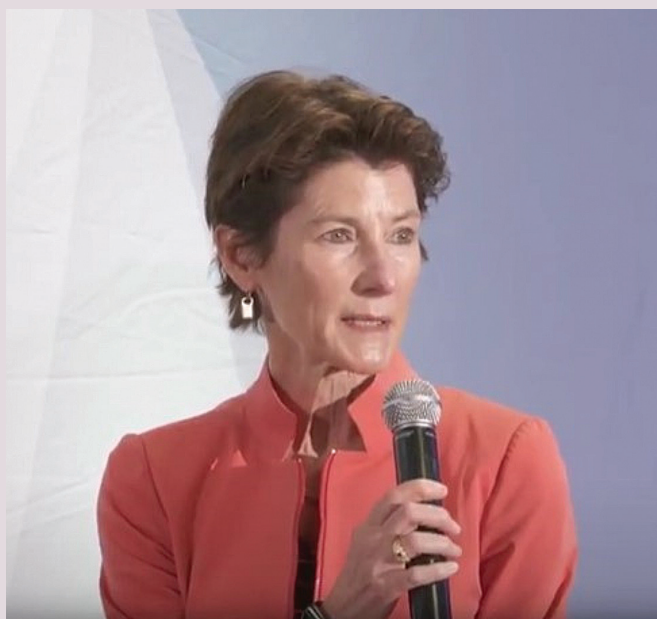
It's not too late to celebrate National Women's Health Week by supporting ZSFG today!

Using Data to Serve Patients

Recently, Dr. Susan Ehrlich, CEO at ZSFG, participated in a timely conversation outlining the transformative power of predictive analytics within clinical care at the hospital. Through meticulous analysis, providers at ZSFG have utilized predictive analytics to pinpoint key patient characteristics and implement tailored care processes to improve heart failure outcomes at an innovative outpatient clinic. By leveraging data to identify at-risk individuals early on, ZSFG providers have not only improved outcomes but also mitigated disparities in care.

The panel also featured Dr. Mark Ghaly, the Secretary of California Health and Human Services Agency, and other healthcare experts.

You can watch a recording of the briefing [here](#).



Plant Your Roots for a Brighter Future

This season, the San Francisco General Hospital Foundation is planting deep roots to secure the health and well-being of our community for generations to come.

From pioneering medical research to providing critical health services, your support empowers Zuckerberg San Francisco General Hospital to tackle the challenges facing San Francisco head-on.

We believe in the power of partnership, which is why we've teamed up with FreeWill to offer you complimentary estate planning tools. By taking advantage of this resource, you can secure your future, protect your loved ones, and make a lasting impact on the health of your community.

By including the San Francisco General Hospital Foundation in your will or living trust, you're not only contributing to our city's recovery but also helping to solve some of the most pressing health issues facing our community today. San Francisco is synonymous with equity and compassion, and together, we can ensure it thrives for generations to come.

Thank you for your support and for participating in our community's journey towards a healthier future.



"They take a process that seems like a lot of work and make it quick and easy. There's not a lot of confusing legal talk. You'll be happy!"

-FreeWill user

ZSFG Welcomes a New Chief Medical Officer



Dr. Gabriel Ortiz was recently named the Chief Medical Officer at Zuckerberg San Francisco General Hospital and Trauma Center (ZSFG). Since first beginning as an intern in the Internal Medicine residency program in 2004, Dr. Ortiz has shown a deep commitment to serving the underserved over his 20 years at the hospital. Dr. Ortiz has also distinguished himself as a multifaceted leader, holding important roles within UCSF and the San Francisco Department of Public Health, training of the next generation of public health providers at ZSFG.

Congratulations, Dr. Ortiz!

THANK YOU *to our* BOARD MEMBERS

The Foundation wishes to thank departing San Francisco General Hospital Foundation Board members as their tenures come to a close on June 30.



MARIA ANSARI, MD

Dr. Ansari is the CEO and executive director of The Permanente Medical Group and president and CEO of the Mid-Atlantic Permanente

Medical Group, two of the largest and most accomplished medical groups in the nation. She also served as the chief medical office liaison to the San Francisco Department of Public Health COVID Vaccine Taskforce. The Foundation is grateful to Maria for her medical and administrative expertise. Thank you, Maria!



JOHN H. BELL

John Bell joined the Foundation's Board of Directors in 2012. John's background working with CIGNA HealthCare and Mercer, where he currently serves as a

Principal and Advisory Unit Leader in Mercer's San Francisco Health & Benefits unit, has been a valuable addition to the Board as the Foundation has grown and evolved in recent years. As Board Chair from 2017-2022, John has been a trusted partner to the Foundation's senior team. Thank you, John!



ELENA FUENTES-AFFLICK, MD, MPH

Dr. Fuentes-Afflick recently completed her tenure as Vice Dean for the UCSF School of Medicine at ZSFG. In addition to her faculty

responsibilities, she served as Chief of Pediatrics at ZSFG from 2009 to 2022 and as Vice Dean for Academic Affairs in the School of Medicine from 2012 to 2022. The Foundation is exceedingly grateful to Dr. Fuentes-Afflick for acting as a critical liaison to ZSFG providers. Thank you, Elena!



THEODORE MICLAU, III, MD

Dr. Miclau is the Vice Chair of the Department of Orthopaedic Surgery at Zuckerberg San Francisco General

Hospital. Ted's commitment to his craft as the Chair of the OTA Basic Science Committee, past president of the Orthopaedic Research Society and the Orthopaedic Trauma Association, and past chair of the OTA Research Committee, is an inspiration. The Foundation is so grateful to Ted for his many years of partnership. Thank you, Ted!

TIME100 List Celebrates Dr. Neil Powe



A familiar face was among the TIME100 Health list this year—Dr. Neil Powe. A champion of health equity in his work at ZSFG, Dr. Powe, along with his colleague Dr. Cynthia Delgado, spearheaded ground-breaking research that led to an important reevaluation of race in medical diagnoses and specifically its use in determining kidney function and transplant eligibility for Black African Americans.

The Foundation awarded Dr. Powe the 2022 Heroes & Hearts Award for this important advancement in health equity.

You can also [read more about Dr. Powe's accomplishments on the TIME100 List.](#)

ZSFG Awards Leaders in Equity

This year, ZSFG celebrated the inaugural Equity Awards, recognizing diversity, equity, and inclusion leaders throughout the hospital campus. Hosted by the Equity Council and Sophia Lai, the Director of Diversity, Equity & Inclusion, the event acknowledged the important work happening behind the scenes to ensure health equity.

Nominated by their colleagues, the winners of this year's awards, both individual practitioners and full teams, exemplify the deep commitment to infusing equity into all aspects of life on the ZSFG campus.

Meet the 2024 Equity awardees.



ZSFG Gun Violence Prevention Partners with the Opera

In anticipation of the San Francisco Opera's newest contemporary opera production, *Innocence*, local and national leaders in the gun violence prevention movement came together for the *Beyond Innocence Symposium*. This event acted as a platform for community activists, policy advocates, artists, and movement leaders to discuss the ways in which gun violence is now ingrained in many communities and how art and activism can heal these wounds.

As a central community partner in this work, the *UCSF San Francisco Wraparound Project* and its founder, Dr. Rochelle Dicker, joined the panel of experts, bringing an important perspective of gun violence as a public health issue. Dr. Dicker reiterated the importance of connecting her work as a trauma surgeon to the critical work of her colleagues in violence prevention out in the



community, bringing humanity, humility, and relevance to affect real change.

[Learn more about Wraparound's support of the SF Opera's Innocence.](#)

Helping Patients Navigate Care



As an integral part of the Transform Mental and Behavioral Health work at ZSFG, Patient Navigators were recently added to several care teams to help patients understand the larger network of available social services, connect to partner organizations, and better relate to their providers while in the hospital.

[Read more about these new members of the care team at ZSFG.](#)

HEARTS on the MOVE

Lately, it seems that the Hearts in San Francisco sculptures are always on the move! From the perimeter of Union Square to new office lobbies and parks throughout the city, each Heart symbolizes a commitment to public health, no matter where they are.

Follow along on the *Hearts in San Francisco interactive map* to find the Hearts closest to you and learn more about the Heart and its artist by scanning the QR code at the base of many of these Hearts.



Help SFGHF Reach Its Goal

Our generous partners at Maverick Capital Foundation challenge YOU to match their recent \$35,000 grant to SFGHF! Your gift of any amount during June will help the Foundation close its fiscal year on strong financial footing and honor our shared commitment to community needs, compassionate care, and health equity. Give now at sfghf.org/donate.



SAN FRANCISCO
GENERAL HOSPITAL
FOUNDATION

PO Box 410836, San Francisco, CA 94141 | info@sfghf.org | sfghf.org